



Geelong Patchwork & Quilters'
Guild Inc.
No.A6698
www.geelongpatch.org.au

Common Thread

April 2024 Newsletter



www.geelongpatch.org.au

Geelong Patchwork & Quilters Guild Inc Quilt-In

Saturday 18 May 2024

10:30 - 4pm

Geelong West Town Hall

153 Pakington St, Geelong West
(Entry and parking available at rear)

Admission: \$10

Group bookings welcome:

Please email Judy Bubb: wheatsheaf_quilting@hotmail.com

**Guest Speaker:
Linda Steele**

In support of:



Challenge Theme: Purple

We challenge you to be inspired by the Peace of Mind Foundation logo to create a block 12½ inches unfinished with a theme of purple.
Blocks will be collected, displayed at Quilt-In and made into a charity quilt.

An exciting variety of raffle prizes

Please bring your lunch, a mug,

Your stitching & show and tell

Tea & coffee provided

Cafes within walking distance

Guess the number of 6.5 inch squares

Traders in attendance

MONTHLY MEETINGS

Monthly meetings are held on the **THIRD** Saturday of each month at the Newcomb Hall, 82-84 Wilsons Road, Newcomb.

Doors open from 10.30am to 3.30pm.
Library is open from 11:00am to 12 midday.
Official Meeting starts at 12:45pm.

Entry is \$6.00. Please bring your lunch and mug.
Refreshments for morning tea are available from 10.45am. The current COVID expectations are outlined on the biscuit bench, please follow these as best you can.

For insurance purposes all members and guests are required to sign in on the Guild attendance sheet.

ETPOS is now available.

FORTHCOMING MEETING DATES

April 20—Yetty Barrett's journey presented by Carole Bosna

May 18—Quilt-In Linda Steele

June 15 -

July 20—

August 17 AGM

September 21—Guild Birthday

October 19 -

November 16

December 21—Christmas Meeting

CONDOLENCES

Heartfelt condolences from all the Guild members to Anne Clutterbuck and her family on the loss of her brother.



NEW MEMBERS AFTERNOON TEA

Saturday 1 June 2024 2-4pm

at Judy Bubb's House

1-2 Oakwood Ridge,
St Albans Park 3219

RSVP - Judy Bubb if attending

e-mail: wheatsheaf_quilting@hotmail.com

New members and existing members are welcome to attend.

Bring show and tell and some stitching to do on the day.

Name Badges



Please remember to wear your name badge at meetings, it helps people know who you are, especially those who are new to the Guild.

You need to wear it to be able to claim your lucky door prize.

If you need to replace your badge please let Judy Bubb know



Geelong Patchwork & Quilters Guild Inc was established in 1985 after a group of 63 women attended a meeting to consider the establishment of a patchwork and quilters guild and was incorporated the same year.

The objectives of our group is to:

- Promote the art and craft of patchwork and quilting
- Bring together and to encourage the establishment of quilt groups
- Encourage and maintain high standards of work and design in both contemporary and traditional areas.

Contents

Monthly Meetings	2
New Members Afternoon Tea	2
Your Committee	3
President's report	4
March Meeting	5
Show and Tell	6
Show and Tell	7
Show and Tell	8
Show and Tell	9
Workshop report	10
Workshop report	11
Workshop report	12
Quilt-In News	13
Website Report	13
Things We Do For Others	14/15
Library Report	16
Diary Dates	17
Friendship Groups	18
Guild Media	19



2023 -24 Committee

President: Anne Clutterbuck
pres@geelongpatch.org.au

Vice President: Margaret Tembo

Secretary: Sue McBride
info@geelongpatch.org.au

Treasurer: Deb Read
treasurer@geelongpatch.org.au

Assistant Treasurer: Anne Thompson

Assistant Secretary: Vacant

Membership Secretary: Judy Bubb
wheatsheaf_quilting@hotmail.com

Website Manager: Jodie Arklay
webman@geelongpatch.org.au

Newsletter Editor: Cheryl Gilbert
news@geelongpatch.org.au

**Assistant Newsletter Editor
& Photographer:** Vacant

Workshops Coordinator: Anne Clutterbuck
anneclutterbuck@gmail.com

Librarians: Judy Bubb
Pauline Lorenz

Newsletter Distributor: Janine Parry

Blankets of Love: Contact: Adrienne Hare

Very Snuggly Quilts/ QFO/KOGO Judy Alcock

Sexual Assault & Family Violence Refuge
Anne Clutterbuck

St John of God Oncology Quilts Sue Palmer

Geelong Mums Wendy Evans

Refreshments; Lyn Holz
Pam Whitten

Special Occasions Co-ordinator Annette Packett

Archivist: Margaret Tembo

The following positions are vacant—

Assistant Secretary

Assistant Newsletter Editor/Photographer

If you can help please let one of the committee know.

PRESIDENTS REPORT



Hello Ladies,

By the time this newsletter reaches you, Easter will be behind us for this year, as will daylight saving! I must admit, while Easter has always been a favourite holiday period, losing Daylight Saving is always a bit depressing as it heralds our heading into the 'dark months' – colder, greyer and often damper days (although this year we might be lucky to get some rain!!). I don't like that on one day it's still light outside at 7:30 and the next it's dark by 6:30, when I'm getting dinner!

I hope you all had a good Easter break – did you do anything special? I'm hosting a family traditional lunch on Good Friday, as I do every year, making a cod casserole that my mother made for us for years – it might not sound appetising but, trust me, it is really delicious and always popular.

Talking about traditions, I attended the Seachange Exhibition in mid March, as did many of you. It was good to see so many members supporting the Seachange group's annual exhibition, which once again had many excellent quilts on display, and their trading table was very tempting. I loved their many little original quilted 'Don't touch the quilts' signs with the quilts. Perhaps this is something we could do as a group project for our exhibitions in the future? Well done, Seachange.



The Gloria Loughman "Dynamic Landscapes" workshop has been highly successful, with 20 ladies exhausting themselves over 2 days painting, designing, cutting and sewing their art quilts based on photos with which they wanted to work. I called in at the end of the 2 days and everyone I spoke to said how much they loved the experience, how wonderful Gloria is as a teacher, and could we please get her to do another one in the future. This is very encouraging and I'm delighted that it was so well received. Gloria has said she would teach another one in 2026 to our group, as we are in Geelong. She is retiring as a teacher next year, but will make the exception for us, so the next one will most likely be the last chance you will have to be taught by Gloria.

We are sponsoring Pam Planner with her exhibit in Vic Quilters next Showcase. We can support another 2 members who would like to put in an entry to Showcase – as long as it is their first time ever, and they are not already Vic Quilters members. If you fit those criteria, please speak to me at the April Meeting - it will be a case of 'first come, first served' if there are more than 2 members who would like sponsorship. There is no money involved in this sponsorship – each Guild or Group (as long as they are financial members of Vic Quilters) can sponsor up to 3 of their members at any one Showcase, based on the above conditions.

I have nearly finished my Mystery Quilt and will have it to show at the April meeting. I would love to see how the rest of you are going with yours... And don't forget to start work on your Quilt In Challenge blocks, for Peace of Mind. The rosters are nearly full – thank you all who have volunteered an hour of their day helping to make this annual event possible. Just a couple of spots still needing to be filled.

'Til I see you all on 20th April, carry on sewing.....

Anne Clutterbuck

President

April Meeting Guest Speaker— Josephine Rout
from the Wool Museum



Editors Note

I was not at the April meeting so did not hear Josephine's talk and no report on her talk was received so unfortunately no information to pass on to members who did not attend.

Heights Sewing Centre est.1935

Stockists of

BERNINA
made to create



accuquilt baby lock
better cut, make & sew

JANOME

 **Husqvarna**

VIKING



176 Pakington Street West Geelong 3218

Telephone: (03) 5229 3558

**** Machine & overlocker servicing by Industry Qualified technicians**

Service centre: 5 Candover Street Geelong West 3218 Ph: 5229 5567

Show & Tell



Anne Clutterbuck— Steel and Stone



Christine Fox - Sunshine Quilt



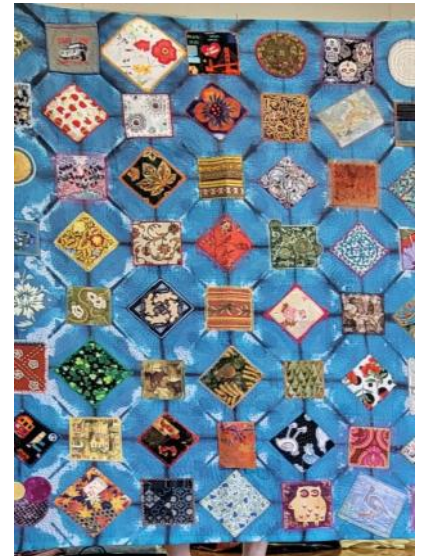
Debra Read -Crocheted temperature blanket



Judy Alcock—Persian Flowers



Margaret Tembo—Pink Eye Spy



Betty Scott—Travellers Blanket



Christine Fox—Vroom Vroom



Judy Bubb- Japan Meets India



Margaret P - Fabric from Bozeman, Montana USA

Show & Tell



LEFT

Nicola Picken— Boro Fabrics From Tokyo

“Curtain” circa 1900 or earlier

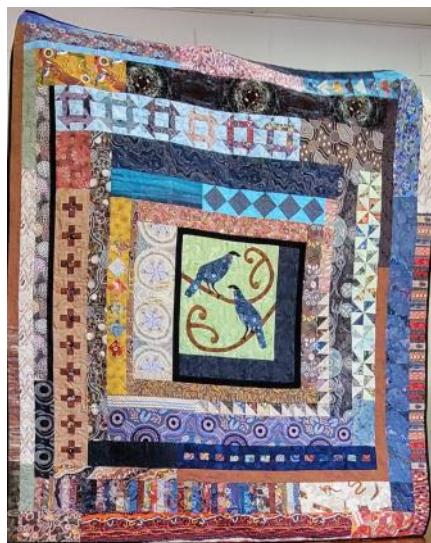
BELOW

Suze Del Papa

Roll up quilted Bear Paw Fabric book side 1 & side 2



Rae Sharp—Giant Heart

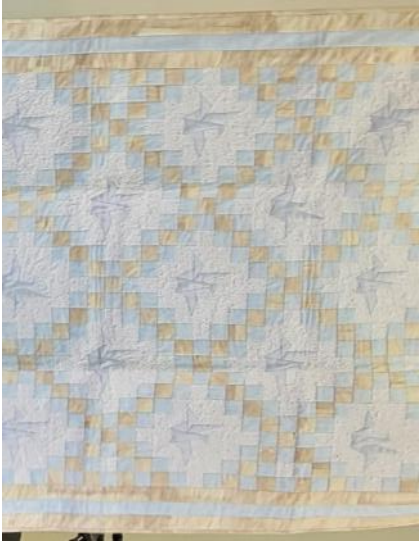


Julie Alsop—Wodjalok



Sue Robertson—Japanese Squash Blossom

Show & Tell



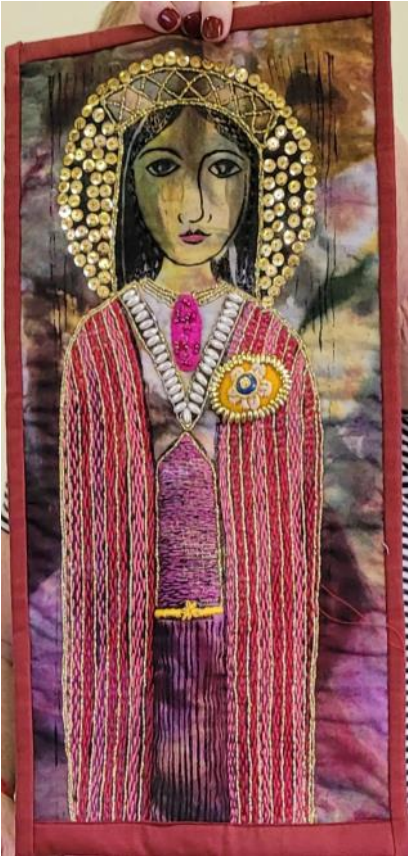
Judy Alcock— Cranes in Chains



Judy Alcock— Fans in Chains



Judy Alcock— Koalas—Go Oz Go



Margaret Tembo Embroidered
Dijanne Cevaal Lady



Jodie and Elliott were given a chicken which has been named Harriett ChickPea. Sadly she was injured, so Elliott made her a saddle to protect her injuries.

Above - Harriett is modelling her new chicken saddle made by Elliott

Left—Elliott started making this pillow by hand at Cubs, finishing it at home using the sewing machine



Show & Tell

SHOW + TELL MAGDA MOORE
I don't have a show but
certainly have a big
tell.
I have a new great
grand son born a few
hours ago.
ARTHUR DEREK FOX
both mum (granddaughters)
+ baby fine.
Two days ago another great
grandson arrived.
XAVIUR WILLIAM ANDREWS
both mum + baby fine + dad
too (my grandson)
COT QUILTS ARE READY.



Judy Bubb—Oriental Jelly



Judy Bubb—Emperors Wheel

Exciting news shared by Magda—
Congratulations from all of us

geelong reprographics.

Print. Design. Promote.

Contact us today to discuss your print enquiry.

p 03 5222 4577

w geelongreprographics.com.au

Fiona Jellie Workshop

Report by Judy Bubb with comments from other participants

Myself and 11 others attended Fiona Jellie workshop held on Saturday 21 February at the Newcomb Hall. No lugging and setting up sewing machines as it was all hand sewing.

Fiona commenced the day showing us her beautiful journals, quilts, wall hangings, needle holders, scrolls and embroidered and hand stitched vintage nightgown. The aim of the day was to set up 6 pages for our journal.

We began with a base of calico. Then the fun of arranging variety of fabric, doileys, household linen and laces began. We hand tacked down all pieces then started hand embellishing with stitches on our first piece.

A trip around the room showed so many different arrangements, colours and choices. During the day Fiona showed us different stitches to use and hints how to place fabric and embellishments to improve our pages. As is always the way the day went very quickly.

Fiona 's last instructions was how to make the pages into a journal. She showed us different techniques to do this.

Thoroughly enjoyed the day and loving how everyone is progressing with their pieces when we meet up for sit and sews.

Other attendee's thoughts

From *Marilyn*. It was fun and motivational. Great to be in a workshop environment again. Fiona is a lovely teacher and very encouraging. Her work is beautiful with so many little treasures hidden within, such as tiny pouches. Really enjoyed the day.

From *Pam*. An interesting and informative workshop. Three different ways to do the binding of the journal were discussed. Techniques and concepts that can be used in other slow stitching projects.

From *Dallas*. Workshop was inspiring especially with a display of Fiona's work that we could touch, photograph if needed for later ideas. Lovely surprise from Fiona of a small bundle of fabric to use if we wished. Great to be doing a workshop again and something new to work on. Lots of lovely fabrics and trims to play with - slow stitching can be part of many projects.

From *Sue*. Fiona was a lovely and helpful teacher. Lovely display of her work. Very freeing workshop that let you

explore and use different textiles in your work.



Gloria Loughman *Dynamic Landscapes* Workshop

Report by Debra Read



Mel and Rae quilting their skies.

Gloria Loughman *Dynamic Landscapes* Workshop

Report by Debra Read

There was a buzz of anticipation as the twenty participants set up for Gloria's Dynamic Landscapes two day workshop. Everyone had ideas, fabrics and a special photo for inspiration. Gloria discussed colour theory and design. She carefully guided the group through the multilayered process, beginning with painting fabric for the featured sky.

Gloria really liked the venue as there is plenty of natural light and an easily accessible area outside to dry the painted fabric.

The ladies liked learning different techniques and different ways to use the fabric. They were taken out of their comfort zone and felt unrestricted with what they were doing. Everyone was kept very busy and ended up exhausted, but in a good way.

An explanation was provided to the ladies to guide them through finishing their quilts. Gloria said that this is her most difficult workshop, only for advanced quilters. She praised the variety and creativity in everyone's work

All agreed that Gloria was an excellent tutor. She was able to provide individual support and she highlighted features of each person's work.

The photos show some of the stages of the process.



Gloria introducing the ladies to the processes of the workshop



Heather painting the sky



Bronwyn checking the fabric drying

Gloria Loughman *Dynamic Landscapes* Workshop

Report by Debra Read



LEFT:
Layering the sky
RIGHT:
Setting out the design



LEFT:
Creating the
dynamic skies

Gloria guiding Rae



LEFT:
Judy with her work

RIGHT:
Sue with her work



HAPPY BIRTHDAY

To the ladies celebrating their birthday in April

Winifred Baker, Brigitte Lee, Sue McBride and Magda Moore.

Belated birthday wishes to Alison Chittock who celebrated her birthday in March

Your birthday flowers are: Daisy and Sweet Pea



Your birth stone is : Diamond



April Website Report—Jodie

www.geelongpatch.org.au

The Quilt-in rosters can be found on the Quilt-In page of our website:

<http://www.geelongpatch.org.au/index.php?act=viewDoc&docId=504>

There are still lots of spaces to be filled, please consider putting your name down for a one hour time slot, if you haven't already.

Don't forget to bring your 6.5 inch squares to our April meeting for the Guess the Number of Squares Competition for Quilt-In.

Jodie
webman@geelongpatch.org.au
Mobile 0411 206 034

QUILT—IN NEWS

Chosen Charity

The Guild will be supporting The Peace of Mind Foundation which is a national wide not-for-profit organisation providing “Here and Now” support to brain cancer patients and their families across Australia.

The Foundation logo is purple, pink and features a gerbera flower.

Challenge Theme—Peace of Mind

The challenge is to create a 12 1/2 inch block relating to the above theme. The predominant colour to be used is PURPLE. You can incorporate as many colours as you wish and use whichever technique you love doing .

Blocks will be displayed at the Quilt-In and then made into a quilt for Charity.

6 1/2 inch squares

This year you have a choice, you can:

Donate some 6 1/2inch squares

Donate some fabric to be cut into 6 1/2inch square

Join in a session using the Go-Cutter to cut the squares. The Go-Cutter will be set up in the Library Room at the March and April meetings .

No experience necessary, all helpers welcome.

Traders Attending

Elm Grove Patchwork - Fabric

Inkblot Lane—Whimsical craft patterns and other cute things.

Old Mill Quilting—Fabric

Peta McGinley—Vintage haberdashery

Quilting Fabrications— Fabric

Serenity Glen Patchworx - Japanese Fabric

Things we do for Others



Geelong Mums

Geelong Mums ask for all donations to be in excellent, clean condition because they hope that anyone who receives a Geelong Mums package feels like they have received a gift that has been prepared with care and thoughtfulness.

Acceptable items include clothing for babies and children, sizes birth 00000 to size 16 teens—no hoods please
Pyjamas and sleepwear

Gro-bags and sleeping bags for babies

Underwear and socks in new or near new condition

Hand knitted or crocheted clothing, beanies, booties and scarves.

Nappies & nappy bags (as new)

Toiletries for babies, children and adults that are new or unopened and within a 3 month expiry date

Maternity pads

Nursing pads

Toiletry bags

Wipes

Drawstring bags in several sizes are also welcome.

Baby/kids toiletry bags 30 x 30cm finished

Craft/toy/book/shoe bags—Small 35x35cm, Medium 40x50cm, Large 50x60cm.

Smaller sized bags that can be used for pens/pencils or small loose toys.

Linen pack bags 60x80cm. Drawstring needs to be long enough to open bag fully.

Donations can be brought to the meetings.

St John of God Hospital Oncology Quilts Sue Palmer

Quilts which are donated to patients in the Oncology Ward need to be 60 x 60 inches .

The quilts provide comfort the patients while they are receiving their treatment and are given to them to keep.

The most asked for colours are purple, blue and green but all colours are accepted.

Quilts have been donated since 2018, at the end of 2023 a total of 266 quilts have been delivered (not including some Yetty delivered from Seachange in Barwon Heads). Congratulations to the Guild members, Bellarine Quilters and Seachange.
Great effort, Sue Palmer

Snippets from the [KOGO News](#) website

It's great to be back!

2024 marks the 20th anniversary of KOGO

and we are planning a host of wonderful ways to celebrate.



For this month...We need:

Adult blankets and Cot blankets

Please note:

Adult blankets (approx. 1.6m x 1.2m)

Cot blankets (1m x 1.2m, SIDS guidelines)

To help our process (and protect our volunteers): Do not wrap items individually Do not include staples in your packaging



quilts for the Royal
Children's Hospital

What size to Make?

Please note the **smallest ones** we are making for the moment are **30" x 30"** There is wriggle room but these are a guide:

Baby:	30" square	30" x 36"
Toddler:	36" square	36" x 42"
Most popular:	40" square	40" x 48"
Biggest:	50" square	50" x 60"

Information provided by Judy Alcock.

SEXUAL ASSAULT AND FAMILY VIOLENCE REFUGE

I do encourage people to keep making quilts for this refuge. Every quilt goes to a woman or a child who has suffered serious abuse and who will appreciate receiving something made with love and compassion that is theirs alone.

Anne Clutterbuck

Things we do for Others



AUSSIE HERO QUILTS
Sue Palmer

Aussie Heroes has been up and running since January 2012. Aussie Hero Quilts (and Laundry Bags) has continued to grow steadily.

Quilt Size:

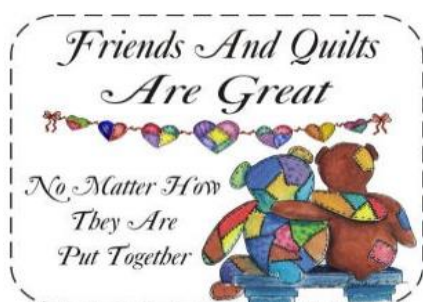
The quilts were designed to be portable and easy to post. Anything posted to the members with an AFPO address and under 2kg is free.

Aussie Hero Quilts are sized to be the width of the fabric so about 42". The length should be 70". I know some of you will think that this size seems a little narrow, but the quilts also have to be small enough for the recipients to fit into their luggage if they are required to move from one location to another unexpectedly. They also need to be the right size to fit on top of a navy bunk at sea and a bunk bed or stretcher on land. If you make the quilts too wide this makes them too big and bulky.

Every Quilt must have an Aussie Hero label on it as follows:

This is an
AUSSIE HERO QUILT
Made for an Aussie Hero .
With gratitude for your service

If Aussie Hero Quilts is something you would like to get involved with speak to Sue Palmer. The Aussie Hero Quilts website is very comprehensive with tutorials available on how to make quilt blocks and also quilt patterns.



BOTTLE CAPS & BREAD TAGS Jodie Arklay

A box will be set up at meetings to collect bottle caps and plastic bread tags.

Jodie will deliver them to a collection point each

SHOPS

Present your current Geelong Guild membership card at these shops for your discount. Please mention your membership prior to finalising your purchases



Heights Sewing Centre (10%)
17 Pakington Street West Geelong



Gails Patchwork Emporium
131 Yarrowee St Sebastopol
(over \$20 cash only)



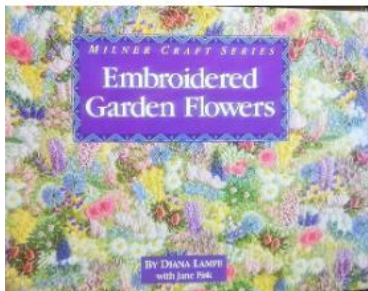


April Library Report.

Thank you to those who helped with a magazine stocktake last month. We have now completed both the book and magazine stocktake.

We have several books and magazines missing but are hopefully they will reappear. Please check at home to see if they are hiding there. (see the list opposite)

Anne Sushames has donated 3 books. Thank you, Anne.



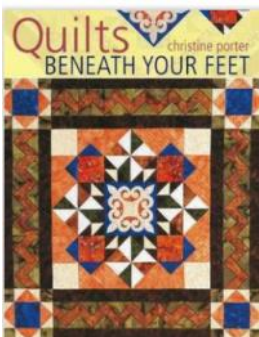
Embroidered Garden Flowers by Diana Lampe with Jane Fisk. An old book but a goodie. This is a collection of embroidered flower projects. Designs perfect to add to your slow stitching. This book

contains exquisitely fine embroidery featuring gardens as a theme, with patterns for more than 50 flowers, such as magnolias, French lavender, English primroses, cyclamen, buttercups, daisies and many more



Classic Modern Quilts.

Ten top designers create 10 modern quilts inspired by a historical Kansas City Star block. Featuring some beautiful quilting.



Quilts Beneath Your Feet by Christine Porter.

An exciting collection of pieced patchwork quilt designs, all inspired by traditional floor tiles.

We don't have many library rules but we feel we must introduce a new rule. Books and magazines are not to be removed from the Library Room. If they leave the room they must be borrowed. Thank you for your understanding of us introducing this new rule.

List of missing books.

- B1221 Free Style Quilts
- B1211 Contemporary Quilts
- B1173 Promenade Hollandise
- B1112 Stitched Textiles Landscapes
- B1148 Quiltmakers Colour Workshop
- B1075 Houses, Houses, Houses
- B1047 Old and New Quilts from Ancient and Modern Cities
- B1048 Approaches to Stitch
- B1049 Inspired to Design 7 Steps to
- B964 Transparency Quilts
- B987 Sewn Toy Tales
- B907 Foundation Borders, Bundles of Fun
- B958 In the Studio
- B878 Blendable Curves
- B802 Quilting with Bits and Pieces
- B736 Hooley Dooley Christmas
- B662 Stitched Vintage
- B663 Stitched in Time for Christmas
- B517 Pincushion Book
- B327 Elegant Stitches by Judith Baker Montano.

Happy borrowing and creating

Judy and Pauline

Lynette Weeks
RETROSPECTIVE
8 APRIL - 8 JUNE 2024
OFFICIAL OPENING MONDAY 8TH APRIL AT 11AM REFRESHMENTS PROVIDED

Focusing on contemporary art quilts, this Retrospective highlights techniques including printing digitally manipulated photographs, dyeing, rusting, mono-printing and painting. Most recent works feature breakdown printing. Eco-dyeing is often used as a base for overprinting.

KYABRAM TOWN HALL GALLERY
lynetteweeks@gmail.com
www.kyabramtownhall.com.au
199-207 Allan St. Kyabram
0490371641 03 58521546

Lynette has been invited to hold a solo exhibition 'Retrospective'. She'd love you to visit Kyabram - a nice place for a few days get-away.
lynetteweeks@gmail.com

Calendar of Events

Please Note: While all care is taken to be correct, this list is compiled from various sources. You should verify the details of events.

BALLARAT FIBRE & TEXTILE NETWORK

LOOSE THREADS EXHIBITION

March 26—April 27 2024

Mercure Hotel and Convention Centre
613 Main Road Ballarat

LYNETTE WEEKS—RETROSPECTIVE EXHIBITION

8 April—8 June 2024

Kyabram Town Hall Gallery
199-207 Allan Street Kyabram

PORTARLINGTON NEIGHBOURHOOD HOUSE

All Crafts Destash Market

Sunday 28 April 8am—3pm

Tables Members \$25 Non-members \$30

Call or email the PNH office to book a table
5259 2290 or enquiry@portnh.org.au

GEELONG PATCHWORK & QUILTERS GUILD INC

Quilt In

18 May 2024

Geelong West Town Hall, Pakington Street West Geelong

QUILTS AT THE ROUND TABLE

Australian Quilt and Textile Collection

Friday 24 May 2024

Cost \$20 per person

The Pyramid, Millrose Quilting & Gallery, 92 Inglis St Ballan
For Bookings phone Ruth 0439 395 300

COLAC QUILTERS

Quilt-In

Saturday 1 June

Lake Colac Bowling Club, 4 Armstrong St Colac

10am—3pm

Entry \$10

Contact Judy Billing

alan.judy.billing@bigpond.com.au 0498 078 235



EGV



Stacks of Stash Market at Embroidery House

Anzac Day - Thursday April 25

1 pm - 4 pm

170 Wattletree Road Malvern

over 20 stalls!

Bargains Galore!

Beads, Haberdashery, Fabric
Yarn, Threads, Patterns
Books, Hoops, Frames
and much more!



GIPPSLAND ART GALLERY

Port of Sale
70 Foster Street
Sale Victoria 3850
(parking at rear via
Grand Canal Drive)
T (03) 5142 9500

OPEN
Monday-Friday
9am-5.30pm
Weekends and Public Holidays
10am-4pm

Annemieke Mein:
A Life's Work
2 March-26 May 2024

TICKETS
(on sale from Nov 2023):
\$20 Adults
\$18 Seniors
\$12 Concession
\$12 Friends of the Gallery
Children under 12 free

Wellington Shire
Residents receive half
price on all tickets
(proof of residency required)

For information, tickets and merchandise visit:
www.gippslandartgallery.com
Email enquiries to: annemieke@wellington.vic.gov.au

VICTORIAN QUILTERS INC.
and
WANGARATTA CENTRE QUILTERS INC.

Invite you to the

AUTUMN GATHERING

SATURDAY 4TH MAY 2024
10.00am - 4.00pm

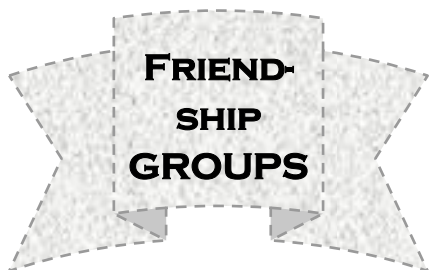
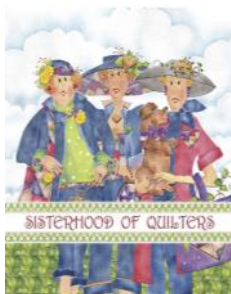
WANGARATTA UNITING CHURCH HALL
ROWAN STREET, WANGARATTA 3677

GUEST SPEAKER
Shelley Kelly
(Winner of the Janet O' Dell Award in Showcase 2021)

TRADERS
My Little Patch - Wangaratta
Sew Bright Alpine Quilting - Bright
Skellywag Sewing School - Barnawartha

CONTACT IF YOU NEED MORE INFORMATION
Leonie - centrecq@gmail.com or ph 0403 226 129

ENTRY: \$10.00 (Via TryBooking.com)



MACHINE QUILTER

Wheatsheaf Quilting

(also quilt sales)

1-2 Oakwood Ridge

St Albans Park 3219.

Ph: 5248 4057 Mob: 0425 810 203

<p>Bellarine Quilters</p> <p>Contact: Christine Fox Mobile: 0481060909</p> <p>Email: cmfox@aapt.net.au</p> <p>Meets: Mondays 10.00 am-3.00pm.</p> <p>Venue: Drysdale Community Hub 25 Eversley Street, Drysdale</p> <p>Everyone welcome</p>	<p>Wyndham Patchwork</p> <p>Contact: Donna Morris (President) or Tania Bodger (Vice President)</p> <p>Meets: 2nd Sat (Mtg); 4th Sat (Sit & sew)</p> <p>Venue: Community Centre & Library, Manor Lakes Community Learning Centre 86 Manor Lakes Bvd Wyndham Vale</p> <p>Email: wyndhampatchworkersinc@hotmail.com</p>
<p>Seachange Quilters</p> <p>Contact: Helen Carruthers 0434 070 211</p> <p>Meets: Every Tuesday & Wednesday and some Saturdays</p> <p>Venue: Senior Citizens 5A Clifford Parade, Barwon Heads.</p>	<p>Regent Street Stitchers</p> <p>Contact: Judy Bubb 0425 810 203 Or Dallas Windmill 0409 430 678</p> <p>Meets: 2nd Saturday 10-2pm, \$ 5.00</p> <p>Venue: South Barwon Community Centre, 33 Mount Pleasant Road, Belmont. All welcome.</p>
<p>Stitchers at Sea</p> <p>Contact: Glenys Russell Ph: 5255 2991</p> <p>Meets: 1st Wednesday</p> <p>Venue: Rotating home system</p>	<p>Purple Pixies</p> <p>Contact: : Leslie Clarke 5281 3254</p> <p>Meets: 2nd Monday</p> <p>Time: 10am-3:30pm</p> <p>Venue: Geelong West Oval</p>

The Appliqué Guild of Australia, Geelong Chapter is now meeting at the Bellarine Sewing Centre, 395 Moorabool Street. Geelong. Commencing February 3rd 2024 and on the 1st Saturday of the month from 10:00 am - 2:00pm.

We meet to share our passion for appliqué, share our learned skills and techniques and build friendships through our craft.

Places are limited to 12, so reserve your place by contacting Chapter Leader: Dawn Holroyd

Phone [0419 324 745](tel:0419324745) or email sewdawn09@gmail.com

Cost: \$5.00

BYO current stitching project, any show and share, mug for a cuppa and your lunch



Geelong Patchwork & Quilters Guild Inc
Quilt-In
Saturday 18 May 2024
10:30 - 4pm
Geelong West Town Hall
153 Pakington St, Geelong West
(Entry and parking available at rear)

Admission: \$10
Group bookings welcome:
Please email Judy Bubb: wheatsheaf_quilting@hotmail.com

Guest Speaker:
Linda Steele

In support of:



peace of mind

Challenge Theme: Purple

We challenge you to be inspired by the Peace of Mind Foundation logo to create a block 12½ inches unfinished with a theme of purple. Blocks will be collected, displayed at Quilt-In and made into a charity quilt.

An exciting variety of raffle prizes
Please bring your lunch, a mug,
Your stitching & show and tell
Tea & coffee provided
Cafes within walking distance
Guess the number of 6.5 inch squares
Traders in attendance



DEADLINE & ADVERTISING RATES

Material for inclusion in the next edition of Common Thread must reach the editor no later than: **Monday 29 April 2024**

Please send all articles to The Editor by email: news@geelongpatch.org.au

The newsletter is printed 11 months of the year from February to December.

Advertising rates are:

\$10.00 per 1/8 page	\$15.00 per 1/4 page
\$20.00 per 1/3 page	\$30.00 per 1/2 page
\$60.00 per full page	

Machine quilters listing \$5.00 per month.

Members buy, swap or sell advertisement:

\$5.00 without photo
\$8.00 with photo (attached to email)

Advertisements must be print-ready and emailed preferably as word doc, publisher (pub) file or pdf. Photos to be attached NOT embedded in an email.

Payment to be made in advance to the Treasurer

Social Media

The Guild has two Facebook pages:

Both these pages are a great way to stay in touch with each other between meetings.

Geelong Patchwork and Quilters Guild Inc. for public viewing

Geelong Patchwork and Quilters Guild Forum: for members only

Instagram Page the QR code opposite is for the page



N

ext Issue :

Have you got something you would like to submit to Common Thread? Feel free to email news@geelongpatch.org.au by **Monday 29 April 2024**.

All articles will be considered for submission but are published at the discretion of either the Editor and/or President.

Material submitted for publication in Common Thread should not infringe copyright of any kind. If you are not the original author or artist, please include source information for written material or pictures so that every attempt can be made to seek permission for its legal use.

Committee Correspondence :

Please direct all correspondence regarding your Guild for the Committee's attention to:

PO Box 753, Geelong 3220

email: info@geelongpatch.org.au
or alternatively hand the letter to Secretary at Guild meetings



@GEELONGPATCH



www.geelongpatch.org.au

Geelong Patchwork & Quilters' Guild Inc. A6698

MEMBERSHIP RENEWAL FORM 2024

The Membership Secretary requires a hard copy for her records.

Annual Fees fall due on 1 March 2024

Payment for membership will be accepted at meetings, via direct debit or a cheque can be forwarded to:

Geelong Patchwork and Quilters' Guild Inc
PO Box 753, Geelong 3221

I wish to renew my membership and I agree to be bound by the rules of the Guild

Name:

Address:

Postcode:

Phone: (BH) (AH)

Mobile:

Email:

I prefer to read the monthly newsletter: (circle choice)

In colour on the Guild website OR a black & white printed copy (for a cost of \$10 per year) collected at monthly meetings

Month & Year of Birth:.....(for insurance purposes)

Signature:

Please circle the amount and method of payment, and then return your form to the Membership Secretary

Adult fee: \$35.00 Junior fee: \$20.00
cash /eftpos/cheque /direct debit:

Account Name: Geelong Patchwork and Quilters Guild Inc.

Bank: Bendigo Bank **BSB:** 633-000

Account Number: 161085014

Please use your name as reference

Geelong Victoria 3220

PO Box 753,

If undelivered, please return to: