

Geelong Patchwork & Quilters'
Guild Inc.
No.A6698
www.geelongpatch.org.au

Common Thread

March 2026 Newsletter



www.geelongpatch.org.au

Geelong Patchwork & Quilters Guild Inc Quilt In

Saturday 23 May 2026

10:00am - 4:00pm

Geelong West Town Hall

153 Pakington St, Geelong West
(Entry and parking available at rear)

Admission: \$15

For group bookings or cancellations:
Please email Judy Bubb: wheatsheaf_quilting@hotmail.com

**Guest Speaker:
Tania Tanti**

In support of:



Challenge Theme:

"With All My Heart"

Create a block 12½ inches unfinished using the colours blue & purple.
Blocks will be collected, displayed at Quilt In and made into a charity quilt.

An exciting variety of raffle prizes

**Please bring your lunch, a mug,
your stitching & show and tell**

Tea & coffee provided

Cafes within walking distance

Guess the number of 6.5 inch squares

Traders in attendance

Geelong Patchwork & Quilters Guild Inc was established in 1985 after a group of 63 women attended a meeting to consider the establishment of a patchwork and quilters guild and was incorporated the same year.

The objectives of our group are to:

Promote the art and craft of patchwork and quilting

Bring together and encourage the establishment of quilt groups

Encourage and maintain high standards of work and design in both contemporary and traditional areas.

2025 - 26 Committee

President: Anne Clutterbuck

pres@geelongpatch.org.au

Vice President: Carole Bosna

Secretary: Jo Wembridge

info@geelongpatch.org.au

Treasurer: Pam Billing

treasurer@geelongpatch.org.au

Assistant Treasurer: Anne Thompson

Membership Secretary: Judy Bubb

wheatsheaf_quilting@hotmail.com

Librarians: Judy Bubb, Pauline Lorenz

Website Manager: Jodie Arklay

webman@geelongpatch.org.au

Newsletter Editor: Bronwyn Drehlich

news@geelongpatch.org.au

Committee Member:

Photographer: Pam Planner

Proof Reading: Jodie Arklay,
Lesley Whitlock

Workshops Coordinator: Anne Clutterbuck

Newsletter Distributor: Janine Parry

Very Snuggly Quilts/ QFO/KOGO Judy Alcock

Sexual Assault & Family Violence Refuge:

Anne Clutterbuck

Our Village: Wendy Evans

Refreshments: Regent Street Stitchers

Special Occasions Co-ordinator: Annette Packett

Archivist: Margaret Tembo

Contents

Committee	2
Monthly Meetings	3
New Members Afternoon Tea	3
President's report	4
Quilt In News	5
Gloria Loughman Workshop	6
Bronwyn Walkley	7
Library	9
Show & Tell	10 - 11
Indigo Dyeing Workshop Report	11
Special Request	12
Very Snuggly Quilts	13
Rainbow Stash Project	14
Wyndham Quilters' Quilt In Report	14
Things We Do For Others	15
Calendar of Events	16
Friendship Groups	17
Guild Media	18
Suggestion Box	19
Membership Renewal Form	19

TREASURER'S NOTICE

Each month the Treasurer's Report is available to view at the Guild Meeting.

It includes the current bank balance and income and expenditure for the previous month.

Please let me know if you have any queries

Pam Billing Treasurer

MONTHLY MEETINGS

Monthly meetings are held on the THIRD Saturday of each month at the Newcomb Hall, 82-84 Wilsons Road, Newcomb.

Doors open from 10 .30am to 3.30pm.
Library is open from 11:00am.to 12 midday.
Official Meeting starts at 12:45pm.

Entry is \$6.00. Please bring your lunch and mug.
Refreshments for morning tea are available from 10.45am. The current COVID expectations are outlined on the biscuit bench, please follow these as best you can.

For insurance purposes all members and guests are required to sign in on the Guild attendance sheet.

EFTPOS is now available.

FORTHCOMING MEETING DATES

March 21 Di Ellis
April 18 Lynne Stone
May 23 (Quilt In) Tania Tanti
June 20 Mary Hitchens
July 18 Biggest Morning Tea
August 15 Melinda Keily
September 19 Carolyn Murfitt
October 17 Skill Sharing
November 21 Lorraine Rogers
December 20 Christmas meeting
January 17, 2027 Sit & Sew
March 20, 2027 Donna Hughes



To our new member, Glenys Carswell.
We hope you enjoy being part of our quilting community

NEW MEMBERS AFTERNOON TEA

Saturday 6th June, 2026, 2-4pm

at Judy Bubb's House

1-2 Oakwood Ridge,

St Albans Park 3219

RSVP - Judy Bubb if attending

e-mail: wheatsheaf_quilting@hotmail.com

New members and existing members are welcome to attend.

Bring show and tell and some stitching to do on the day.

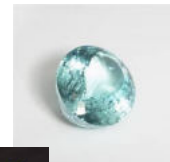


February Birthdays

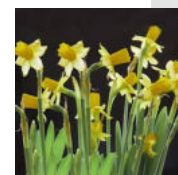
To all of you celebrating a birthday in March:

Judy Alcock, Jan Blyton, Marilyn Davidson, Pauline Lorenz, Kerrie Maloney, Sue May, Patricia Norton, Pam Planner, Kelly Smith and Ella Van Nunspeet.

Your birthstone is Aquamarine



Your Birth flower is the Daffodil



PRESIDENTS REPORT



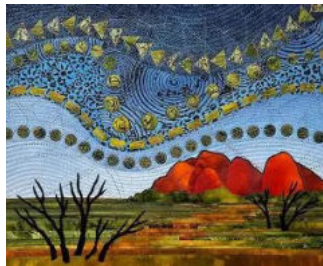
Hello Ladies,

Happy Worldwide Quilters' Day on Saturday 21st March ... (always the 3rd Saturday in March each year)... bring along your internationally inspired/made quilts for Show & Tell to help celebrate this world wide craft/art form we all love.

We are well into March already -nearly ¼ of the year gone - so quickly too! By the time this newsletter comes out, 18 members will have participated in the first workshop of the year with Veronique Diligent. As I am one of the 18, I am hoping I have learnt a lot about embroidery with applique, and how to put a slow stitch book of cute embroidered motifs together. It will be interesting to hear what the other class members think of the day and to see what they make as a result of the workshop. If any of our items are anywhere near as lovely as the book that Veronique herself made, it should be exciting. Plenty of time to get these projects finished before our next exhibition in 2027.



By Veronique Diligent



Rhythm in Landscape

The second workshop this year will be with Gloria Loughman and is scheduled for Saturday/Sunday 24/25 October at the Drysdale Senior Citizens Hall. Gloria will be teaching her 'Rhythm in Landscapes' workshop – which has some elements of the Dynamic Landscapes in it, but with significant variations. You all know what an excellent teacher Gloria is, but you may not realise we are very fortunate that she has agreed to teach our group, as she has retired from teaching everywhere else. It is only because we are 'local' and it's easier for her being resident in Drysdale that she is happy to once again do a workshop with us. I have currently got 10 names for the class. Please let me know if you are interested. I will open this one up to the wider quilting community to ensure we have a full class, but Guild members get preference... get in quick if you want to do it.

It was gratifying to see how many of you are continuing with the Rainbow Stash project, with two months' worth of squares on display at the February meeting. I love seeing how they all come together, and no matter how diverse the interpretation of the theme and the colours, that as a whole it is visually exciting. With another two months' worth of squares, it is going to make a very colourful and absorbing display at Quilt In this year. We will need all 5 months of squares delivered to us at the April meeting so we can work out how to 'hang' them to display for that event. I appreciate all your support with this project, and hope that you are enjoying this different 'challenge' for 2026.

Talking of Challenges – remember the theme for the Quilt In Challenge this year is 'With all my Heart' and the colours to work with echo the colours of the Wombat's Wish charity that we are supporting - blue and purple. You have always outdone yourselves with creating wonderful 12 ½ " square blocks for our annual Quilt In challenges, and I expect this year will be no different. Can't wait to see what you come up with.



I hope you all enjoyed Bronwyn Walkley's talk at February meeting. The quilts she has made and displayed were so inspirational weren't they? Quite varied, lots of complex patterns, and all very skilfully done.

At the time of writing this, I have not yet attended the ADFAS lecture on the History of Embroidery from 10th Century given by Susan Williams, the former Chief Executive of the Royal School of Needlework at Hampton Court Palace. I am looking forward to it and will give you some feedback at the March meeting.

You are very generous to make charity quilts so willingly and without requiring recompense, and I am very grateful, as are the charities we support. You may not know that some of the money we raise each year, from Quilt In, or our Exhibition or workshops, is put towards purchasing wadding for all the Snuggly Quilts Programme quilts, since Judy Alcock goes through rolls and rolls of it every year, and at over \$200 for a roll it is not a cheap item. We also recently purchased wadding from the Bellarine Quilters, towards finishing 9 very large quilt tops that were donated recently by Jenny Nichols. I will add my thanks to those of you who have taken these home to put them together and quilt them. The workmanship in the tops is really lovely, and when finished, these quilts will be treasured by the lucky recipients. I still find it hard to understand how someone could give away so many beautifully made quilt tops after all that work! I have written to Jenny to thank her for her extraordinary donation to our charity quilt programmes.

PRESIDENTS REPORTCONTINUED

I would like to remind you all of the Quilts for Others that we are currently involved with:

1. **Snuggly Quilt Programme** for the Royal Childrens' Hospital. There are size restrictions on quilts for this programme and these are laid out further on in the newsletter. You can also pick up a slip of paper at meetings with the sizes required for their quilts if you're not sure.



2. **The Sexual Assault & Family Violence Centre Refuge** in Geelong. I take all sorts of sizes to this organisation – generally around 60 – 80 quilts a year.

We have been asked to make some Christmas themed baby cot quilts and /or Christmas stockings for **The Special Babies Unit at St John of God Hospital**, to provide some cheer for the little ones during what should be a happy festive season - not lying in a hospital bed with worried parents nearby.

Oz Comfort Quilts is a 'private' group on Facebook that make quilts for those who lose everything in bushfires, or floods. You will find a contact for this group further on in the newsletter if you have an item you would particularly like to donate to this cause.

For the moment, as Elmer Fudd used to say, "TH.. th.. ..th.. er ..that's all, folks!" I look forward to seeing you at the March meeting. In the meantime, happy stitching.

Anne Clutterbuck

Quilt In News



Quilt In '26 Raffle Quilt

The blocks for this quilt were part of the Quilt In Challenge in 2025.

They were assembled by Margaret Tembo and quilted by Judy Alcock



Quilt In will be upon us before we know it so just a couple of house keeping tasks to keep us on track:

Rosters will again be circulated at the March Meeting. Many thanks to all those who put their name on the rosters. There are still a few places to be filled so if you missed seeing a roster please look for them at the next meeting or speak to a committee member.

Six and a half inch squares: We are once again looking for donations of six and a half inch squares for our "Guess the Number of Squares" competition. All donations gratefully accepted.

Please give them to Carole Bosna or Bronwyn Drehlich.

Challenge: Create a 12 1/2 block to be used in a quilt with the theme "With All My Heart" and relating to our chosen charity Wombat's Wish.

Pre loved books: Time to declutter your collection of quilting/patchwork books? The Guild is looking for books to sell at our May Quilt-In. Funds raised will go to purchasing new books and magazines for our library. Contact Judy Bubb to arrange drop off or bring them to the Quilt-In on Saturday May 23.

This year's Traders: Gum Valley Patchwork

Serenity Glen

The Old Mill

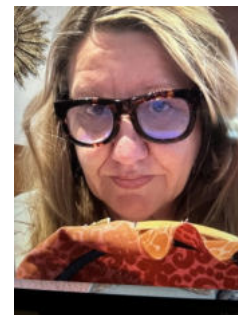
Pickled Pig

Chrissie's Timeless Treasures

Heights Sewing

Guest Speaker for March Di Ellis

Di Ellis is a Melbourne based textile artist with a background in fine art print making from RMIT. She is known for her hand embroidery work, often using reclaimed fabrics and exploring themes related to memory, identity and the natural world.



Position Vacant

Our monthly newsletter "Common Thread" is an integral part of the Guild. It contributes to the smooth operation of the Guild by keeping everyone informed about what's going on within our group as well as a little of what's happening in the wider quilting community.

After two years as Newsletter Editor I have decided that it is time to pass the baton on at our next AGM in August '26 and as such I will not be renominating for the position.

If you are interested in taking on this position please come and chat with me so I can show you how I go about publishing the newsletter.

Bronwyn Drehlich

Newsletter Editor

The Role of the Newsletter Editor

The newsletter editor receives, selects and collates articles for The Common Thread each month except January, attends monthly committee meetings and reports to the committee. They are the contact person for businesses wanting to advertise in the Guild Newsletter.



Simple Guide:

Types of Pins & Clips
& When to Use Them

Glass Head Pins



What it's for:

All-purpose, works well on most fabrics



When NOT to use it:

Heat-sensitive fabrics (the heads can melt)



Ballpoint Pins



What it's for:

Knit fabrics, jerseys, delicate stretch fabrics



When NOT to use it:

Tightly woven fabrics, heavy materials



Quilting Pins



What it's for:

Thick, layered fabrics, quilting, crafts



When NOT to use it:

Silk, delicate or lightweight fabrics



Wonder Clips



What it's for:

Thick, layered fabrics,
binding, hard to pin areas



When NOT to use it:

Fine, delicate or sheer fabrics (can leave marks)



Upcoming Workshop...

Gloria Loughman Landscapes with Rhythm

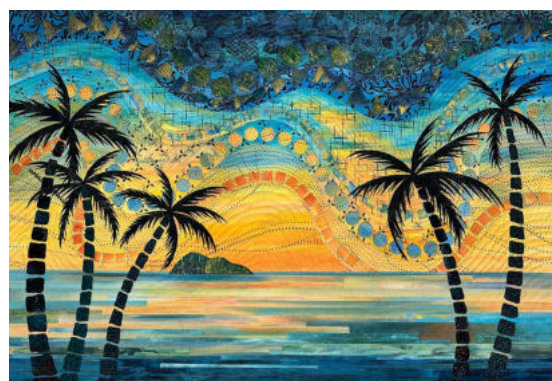
October 24 & 25

Cost: \$180 (members) \$200 (\$200 non members)

Venue: Drysdale Senior Citizens Centre
25 Eversley Street, Drysdale

Please let Anne Clutterbuck know if you are interested.

More information about the workshop at www.glorialoughman.com



February Guest Speaker

Bronwyn Walkley

The guest speaker at our February meeting was Bronwyn Walkley. For those who are unsure of who this is, Bronwyn is the current president of Victorian Quilters. Bronwyn grew up on Kangaroo Island so shopping was very limited. Like most children growing up in the 1950's, they were taught to "mend and make do". Following on from this Bronwyn was taught to sew her own clothes when she wanted something new and any left-over fabrics from these garments were neatly rolled up and stored in a cupboard.

Years later, Bronwyn went to visit her sister in Sydney. Her sister had discovered patchwork and Bronwyn liked what she saw. Home she goes to her cupboard of fabric rolls to make her first quilt. It didn't take long for her to realise that dressmaking fabric and patchwork fabric are very different. She did make one quilt out of dressmaking fabric but then turned to quilting fabric, admitting that she became slightly addicted to buying fabric. (Aren't we all!) Her early works were influenced by Margaret Rolfe and her Australian animal appliques. When Bronwyn moved to Tasmania for 18 months, she was welcomed into a local quilting group, which she was very grateful for, making new friends and learning some more. The quilts kept coming.



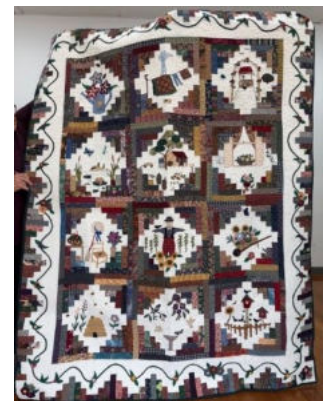
A trip to the USA had her visiting the Amish areas in Pennsylvania. Bronwyn also loved "Gone with the Wind" and the history of the civil war so was obviously drawn to the civil war reproduction fabric. But this visit also prompted her to start a whole cloth quilt which she admits, took years to finish. This quilt was a work of art, as all her quilts were, but I admit to being slightly star struck by



anyone that completes a whole cloth quilt, knowing full well that I would never attempt one myself.

Bronwyn discovered early in her patchwork endeavour that you can buy all these wonderful fabrics and kits online, and loves receiving these gorgeous little parcels in the mail. She quilts her own quilts. She started with a Handi quilter, then moved on to a Sweet Sixteen, which she liked much better, and finally on to a long arm machine. We were treated to a wonderful display of her quilts, from her early quilt made from dressmaking fabric, to her whole cloth quilt and through to her more recent ones, some of which were prize winners. It was lovely to hear Bronwyn's story and see her quilts and how they have evolved over the years.

Sue Robertson



Some of Bronwyn's Quilts



Heights Sewing Centre since 1935

Currently at 176 Pakington Street, Geelong West, 3218

Phone; 5229 3558

WE ARE ON THE MOVE AFTER 90 YEARS !!

After 90 wonderful years in our beloved Pakington Street Store, we are moving into Milton Street, Bell Park where our service division, retail store and classroom will all be under the one roof. We are hoping to make this change at the end of March 2026.

MARCH SPECIAL = 10% off bag hardware, patterns and zippers

- Keep an eye on our socials for updates! -

Service and repairs still at 5 Candover Street, Geelong West 3218

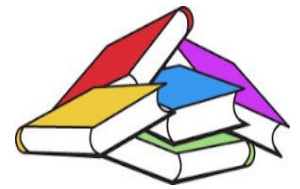
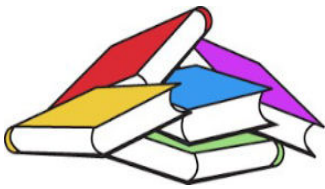
Phone: 5229 5567

We are stockists of:- Bernina, bernina longarm, Janome, babylock, Husqvarna Viking, Pfaff, Juki overlockers, Handquilter

Loads of Haberdashery, Accuquilt Go! Cutters and dies, Rasant thread, Mettler threads, Wonderfil threads, Loose buttons, quilt rulers, fabric strip cutter rulers, elastics, Men's and Ladies Hankies, By Annie bag supplies, VooDoo Rabbit bag supplies, Bag foam, interfacings, Battings (Matilda's own and Hobbs) and much more!

Large range of cotton quilt fabrics including Australiana, batiks, plains, stripes, spots, Red Tractor, Peter Rabbit, Large range of Panels.

We would LOVE to see you all in store at Pako or in our NEW STORE in April at 26-28 Milton Street, Bell Park 3215 — easy access from the Geelong West turnoff on the Ring Road.



March Library Report

We have finalised our Library stock take. Our library has 489 books and 314 magazines. (which includes Quilters Companion, Down Under Quilts, Downunder Textiles, Embellish, Quilt Mania, Quilting Arts, Stitch and Textile Fibre Forum) Unfortunately several of these magazines are no longer published. Here is a list of missing books and magazines. Please check at home if you have them.

Books

- 1066 250 More Continuous Line Quilting Designs
- 1068 250 Continuous Line Quilting Designs
- 1072 Quilted Gifts by Universal Magazines
- 1127 Log Cabin Fever by Evelyn Sloppy
- 1128 Inches by Peggy Donda-Kebert
- 1169 Heart to Hand by Kathy Campbell
- 1174 Bargello Quilts with a Twist
- 1185 Applique by Alison Glass
- 1186 Wanderlust by Amanda Leins
- 1189 Another Season of Beautiful Blossoms
- 1214 Strata Various Quilts by Barb & Mary Hooverara Perains



Magazines

- 831 Quilters Companion No. 43
- 890 Quilting Arts Issue 52
- 974 Quilt Mania Issue 92
- 989 Quilt Mania Issue 94
- 1106 Quilters Companion Quilts from Precut Fabric No. 4
- 1124 Quilters Companion No. 76
- 1138 Quilters Companion No. 77
- 1234 Quilters Companion Machine Embroidery No. 1
- 1292 Quilters Companion No. 118



We have purchased 2 older copies of Quilt Mania. Issue 118 and 120. Both magazines are full of delicious quilts and projects.

Time to declutter your collection of quilting/patchwork books? The Guild is looking for books to sell at our May Quilt-In. Funds raised will go to purchasing new books and magazines for our library. Contact Judy Bubb to arrange drop off or bring them to the Quilt-In on Saturday May 23. Thank you.

Happy Reading and Sewing
Judy and Pauline

We don't have many library rules but we feel we must introduce a new rule. Books and magazines are not to be removed from the Library Room. If they leave the room they must be borrowed. Thank you for your understanding of us introducing this new rule.

Happy Reading and Sewing

Judy and Pauline

Show and Tell



Jo Wembridge
Circle
Alma's Journey



Janine Parry



Jennifer Smith
Great Grandmother's Quilt
Made circa 1920



Magda Moore
Knee Rug



Judy Bubb
Dragonfly Pillow



Sharon Schueler
Grannies Garden
(front & back with
family tree)



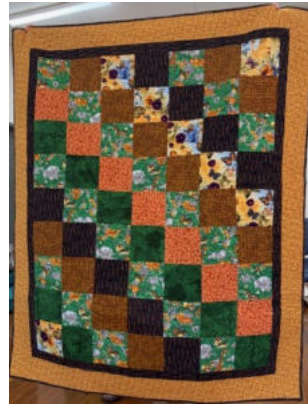
**Sue Robertson, Dallas Windmill,
Pam Planner & Judy Bubb**

Results of a Shibori/Indigo dyeing
workshop

Bev Christie
L - R: Anyone for Cricket, Happy Cat, Bubbles, Good Golly



Show and Tell



Wendy Evans has made these quilts for the Sexual Assault Unit



Indigo Dyeing Workshop at The Makers Space Shed, Colac



Pam, Dallas, Kelly and I attended a one day workshop. The Makers Space Shed is located in the Colac Showgrounds. We arrived and enjoyed a cuppa and a piece of delicious chocolate cake. Our teachers, Sue Tate and Gail Maddern explained what we were doing and we got struck into it. We each produced 4 pieces of indigo dyed fabric: 2 using the stitched shibori technique and the other 2 we experimented with rubber bands, marbles, pegs, rope etc. We dipped the fabric into the indigo dye vat eight times and placed it outside to oxidize between dips. It was a hot day and we were very happy with the end result.



Side note: Kelly and I were delighted and surprised when we saw the containers which the indigo was stored in, Pottery Bread Crocks! It brought back some memories of the pottery we had at home and of visiting Gellibrand Pottery all those years ago.

Judy Bubb



Special Request

Cate Folvig or Suzanne Crook (Associate Nurse Unit Managers, Special Care Nursery, SJOG) have requested donations of baby cot sized Christmas themed quilts and/or Christmas stockings to gift to The Special Care babies for 2026.

Cot sized quilts should be about 100 x 120cm (39" x 47"). Items can be given to Jo Wembridge, Secretary when complete.

Thanks
Jo Wembridge

Also...

I mentioned that Oz Comfort Quilts is a Facebook group that are collecting and distributing quilts and also knitted items like beanies, babies blankets etc to people who lost their homes and all their belongings in recent bushfires. The address you can mail items to is:

Jan Ebbutt McFadyen, Oz Comfort Quilts, 4 Stockdale Close, Ferntree Gully. 3156.

Anne Clutterbuck



**Great gift ideas
from your photo,
logo or drawing**



Stubby Holders



Mousepads Keyrings



BYO T-Shirt Print

- COPYING / PRINTING
- LAMINATING TO 900MM W
- POSTERS / ENLARGEMENTS
- SCANNING TO 900MM W

- PHOTOCOPYING
- BUSINESS CARDS / FLYERS
- WIDE FORMAT PRINTING
- INVITATIONS / CARDS

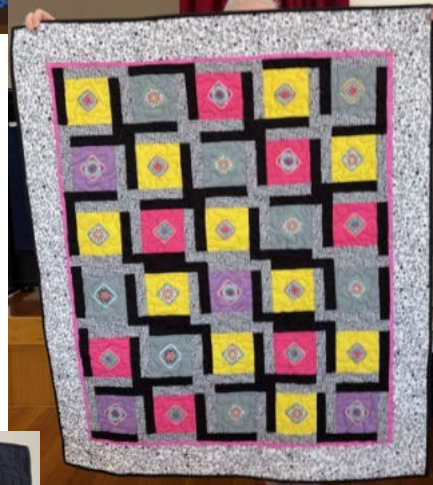
- BINDING A4 / A3 / A2
- CANVAS PRINTS
- VHS TO DVD TRANSFER
- PHOTOSHOPPING

geelong
reprographics.

p 03 5222 4577

w geelongreprographics.com.au

Very Snuggly Quilts



Rainbow Stash Project

A new challenge was announced at the November meeting. It will run for 6 months with the option of being extended if popular. The challenge is each month to make an 8" finished block consisting of 3 layers (top, batting and backing) Each month a two colour combination and a word prompt for the theme will be given. The challenge was inspired by a similar one at AQC Melbourne in 2026.



Block 2 - Colours: **Fuchsia (hot pink) & Rusty Brown** Theme: **Festive**



Block 3 - Colours: **Lemon Yellow & Lime or Kelly Green** Theme: **Flora**

Block 1 - Colours: **Royal Purple & Aqua** Theme: **Circles**

Block 4 - Colours: Burnt Orange & Indigo Theme: **On The Slant** Due at the March Meeting

Block 5 - Colours: Forest Green & Scarlet Theme: **Shapes** Due at the April Meeting

Wyndham Quilters' Quilt In



Recently a group of the Bellarine Quilters attended the Wyndham Quilters Quilt In. It was a great day out and a lot of fun. Approximately 150 people attended. There were pop up stalls with a variety of Traders tempting us with their wares as well as activities and raffles. The show and tell was amazing and it was great to see another group's work. The variety and skills in the work on display was amazing.



They had two guest speakers. Jodie Carlton from Ric-Rac, with her collection of hand-made toys, and Deb Layt took us through her quilting journey with her marvellous display of quilts.

Both were thoroughly entertaining and generous in allowing us to get a close-up view of their work. Finally, morning and afternoon tea was exceptional. All in all it was an all-round fabulous day out.

Chris Fox



Things we do for Others

kogo

For this month...We need:

Adults and Children's Garments

Indigenous blankets in red, yellow and

black or Torres Islander colours -: green,

blue, black and white

We would also love some more knitted toys

Please note: Adult blankets (approx. 1.6m x 1.2m)

Cot blankets (1m x 1.2m, SIDS guidelines)

To help our process (and protect our volunteers): Do not wrap items individually Do not include staples in your packaging.

Check out our website at <https://www.kogo.org.au>



It's great to be back!
2024 marks the 20th anniversary of KOGO
and we are planning a host of wonderful ways to celebrate.

The Sexual Assault & Family Violence Centre

We are still making and collecting quilts of **any** size for this centre. Each refuge occupant receives one quilt they get to keep beyond their stay, so I look to deliver a good quantity at least twice a year. Your commitment to making quilts for less fortunate people is very much appreciated by these women as they try to get their lives back together. The SAFVC thanks you for your generosity.

For more information about the centre go to

<https://www.safvcentre.org.au>

A heartfelt thank you



Our Village, formerly known as Geelong Mums, can help get them to a family or child in need. We ask for all donations to be clean, in excellent condition, and within Australian safety standards.

Our goal is that anyone who receives an item or package from Our Village feels like they have received a gift prepared with care and thoughtfulness.

Acceptable items include clothing for babies and children, sizes birth 00000 to size 16 teens

— no hoods on any clothing up to size 1.

- ☑ Pyjamas and sleepwear.
- ☑ Gro-bags and sleeping bags for babies
- ☑ Underwear and socks in new or near-new condition.
- ☑ Hand knitted or crocheted clothing, beanies, booties and scarves.

We are always in need of toiletries for babies, children and adults, toiletry bags as well as many other things necessary for babies and children. Please check out our website at

<https://www.ourvillage.org.au>

Donations can be brought to the meetings.

Wendy Evans is the contact person

Very Snuggly Quilts

Quilts for the
Royal Children's Hospital
What size to Make?



Please note the **smallest ones** we are making for the moment are **30" x 30"** There is wriggle room but these are a guide:

- Baby: 30" square, 30" x 36"
- Toddler: 36" square, 36" x 42"
- Most popular: 40" square, 40" x 48"
- Biggest: 50" square, 50" x 60"

We are in need of quilts for boys at the moment. These should be the biggest size to accommodate teenagers.

For more information please go to

<https://www.vsq@victorianquilters.org>

Calendar of Events

Please Note: While all care is taken to be correct, this list is compiled from various sources. You should verify the details of events.

QUILTS AT THE ROUND TABLE

Australian Quilt and Textile Collection
 Entry \$25 per person
 The Pyramid, Millrose Quilting & Gallery,
 92 Inglis Street, Ballan
 For Bookings phone:
 Ruth 0439 395 300



Australia's Premier Quilting Event
 April 9 to 12, 2026
 Royal Exhibition Building
 Carlton Gardens, Melbourne

Australasian Quilt Convention

9th - 12th April
 10am - 4pm

Royal Exhibition Building
 Melbourne

Don't Miss Out!

Classes for 2026 are now open and have limited spots remaining.

Don't miss your chance to learn from expert quilters, discover new techniques, and get inspired. Spots are strictly limited, so secure your place today and be part of Australia's premier quilting event.

The classes listed below have limited spots remaining, book now before they're gone!

Secure Your Spot Here!



Oz Quilt members Exhibition on Tour

Louis Joel Arts & Community Gallery
 4th - 29th May 10am - 4pm
 5 Sargood Street, Altona

For further information on other venues see the website at

<https://www.ozquiltnetwork.org.au>

Quilt & Craft Show

Crib Point Community House
 7 Park Road, Crib Point
 March 28th
 10am - 4pm
 Admission \$5



Waverly Patchworkers

Quilt Show

Mulgrave Community Centre
 355 Wellington Road,
 Mulgrave
 2nd - 3rd May
 Sat: 9 - 5 Sun: 9 - 4



One Step Further 2026

Old Auction House Gallery
 52 - 56 Mollison Street,
 Kyneton, Vic
 28th May—22nd June
 Entries open 1st April
 close 30th April

Spa Quilters Daylesford

Bi Annual Quilt Show

Theme: Peace
 6th June - 7th June
 10am - 4pm
 St Peter's Church & Parish Hall
 Central Springs Road,
 Daylesford



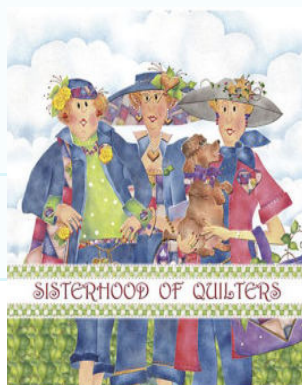
Bendigo & District Quilters Inc.

Biennial Exhibition New Beginning

Prince of Wales Showgrounds
 Holmes Road,
 Bendigo
 11th June - 13th June
 9.30am - 4pm

FRIENDSHIP GROUPS

<p>Bellarine Quilters</p> <p>Contact: Christine Fox Mobile: 0481060909</p> <p>Email: cmfox1351@outlook.com</p> <p>Meets: Mondays 10.00 am-3.00pm.</p> <p>Venue: Drysdale Community Hub 25 Eversley Street, Drysdale</p> <p>Everyone welcome</p>	<p>Wyndham Patchwork</p> <p>Contact President: Julie Melbourne 0419 306 949</p> <p>Vice President/Newsletter: Laura Warren 0455 435 280</p> <p>Secretary: Natalie Dunn 0423 770 741</p> <p>Meets: 2nd Sat (Mtg); 4th Sat (Sit & sew)</p> <p>Venue: Community Centre & Library, Manor Lakes Community Learning Centre 86 Manor Lakes Bvd Wyndham Vale</p> <p>Email: wyndhampatchwork-ersinc@hotmail.com</p>
<p>Seachange Quilters</p> <p>Contact: Helen Carruthers 0434 070 211</p> <p>Meets: Every Tuesday & Wednesday and some Saturdays</p> <p>Venue: Senior Citizens 5A Clifford Parade, Barwon Heads.</p>	<p>Regent Street Stitchers</p> <p>Contact: Judy Bubb 0425 810 203</p> <p>Or Dallas Windmill 0409 430 678</p> <p>Meets: 2nd Saturday 10-2pm, \$5.00</p> <p>Venue: South Barwon Community Centre, 33 Mount Pleasant Road, Belmont.</p> <p>All welcome.</p>
<p>The Applique Guild of Australia Geelong Chapter</p> <p>Contact: Dawn Holroyd Ph: 0419 324 745</p> <p>Meets 1st Saturday of the Month 10.00am—3pm</p> <p>Venue: South Barwon Community Centre 33 Mt Pleasant Road Belmont</p>	<p>Purple Pixies</p> <p>Contact: : Leslie Clarke 5281 3254</p> <p>Meets: 2nd Monday Time: 10am-3:30pm</p> <p>Venue: Geelong West Oval</p>



SHOPS

Present your current Geelong Guild membership card at these shops for your discount. Please mention your membership prior to finalising your purchases



Gails Patchwork Emporium
131 Yarrowee St Sebastopol
(over \$20 cash only)



Heights Sewing Centre (10%)
176 Pakington Street, West Geelong
(until end of March)
26—28 Milton Street, Bell Park
(From beginning of April)



MACHINE QUILTER

Wheatsheaf Quilting

(also quilt sales)

1-2 Oakwood Ridge
St Albans Park 3219.
Mob: 0425 810 203



Name Badges

Please remember to wear your name badge at meetings, it helps people know who you are, especially those who are new to the Guild.

You need to wear it to be able to claim your lucky door prize.

If you need to replace your badge please let Judy Bubb know and she will organise this at a cost of \$20

DEADLINE & ADVERTISING RATES

Material for inclusion in the next edition of Common Thread must reach the editor no later than:

Monday, 30th March, 2026

Please send all articles to The Editor by email:
news@geelongpatch.org.au

The newsletter is printed 11 months of the year from February to December.

Advertising rates are:

\$10.00 per 1/8 page	\$15.00 per 1/4 page
\$20.00 per 1/3 page	\$30.00 per 1/2 page
\$60.00 per full page	

Machine quilters listing \$5.00 per month.

Members buy, swap or sell advertisement:

\$5.00 without photo

\$8.00 with photo (attached to email)

Advertisements must be print-ready and emailed preferably as word doc, publisher (pub) file or pdf. Photos to be attached NOT embedded in an email.



Social Media

The Guild has two Facebook pages:

Both these pages are a great way to stay in touch with each other between meetings.

Geelong Patchwork and Quilters Guild Inc. for public viewing

Geelong Patchwork and Quilters Guild Forum: for members only

Instagram Page: there is an Instagram account for public viewing called geelongpatch. The QR code opposite is for the page .

Next Issue :

Have you got something you would like to submit to Common Thread? Feel free to email news@geelongpatch.org.au by

Monday, 30th March, 2026

All articles will be considered for submission but are published at the discretion of either the Editor and/or President.

Material submitted for publication in Common Thread should not infringe copyright of any kind. If you are not the original author or artist, please include source information for written material or pictures so that every attempt can be made to seek permission for its legal use.

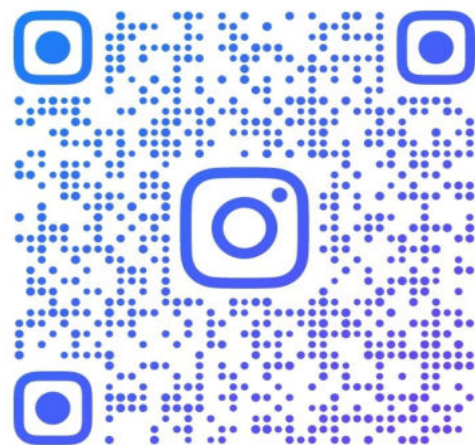
Committee Correspondence :

Please direct all correspondence regarding your Guild for the Committee's attention to:

PO Box 753, Geelong 3220

email: info@geelongpatch.org.au

or alternatively hand the letter to the Secretary at a Guild meeting.



@GEELONGPATCH

Suggestion Box.....

There was a suggestion by Margaret Tembo to raise the fee for our monthly speaker. This was discussed at our February committee meeting and it was agreed to raise the speaking fee.

Our Quilt of Hexagons



Have you noticed the Hexagon quilt on the front round table as you walk into the hall? Have you made a hexagon with your name and commencement year and had it stitched to this unique historical quilt?

If you haven't, please see me for instructions and a piece of cream hexagon.

I have gone through the membership list and there are a few who haven't made a hexagon. I know who you are and will be seeking you out.

Judy Bubb

Membership Secretary

Reminder

Annual Membership fees are due on March 1. These may be paid directly to the Treasurer or by Direct Deposit into the account shown on the form. Below is a Membership form for your convenience. Please fill in and return to Judy Bubb so your details can be checked and updated if necessary. This is particularly important if you have moved recently.

Geelong Patchwork & Quilters'

Guild Inc. A6698

MEMBERSHIP RENEWAL FORM 2026

www.geelongpatch.org.au

The Membership Secretary requires a hard copy for her records.

Annual Fees fall due on 1 March 2026

Payment for membership will be accepted at meetings, via direct debit or a cheque can be forwarded to:

Geelong Patchwork and Quilters' Guild Inc
PO Box 753, Geelong 3221

I wish to renew my membership and I agree to be bound by the rules of the Guild

Name:

Address:

.....

Postcode:

Phone: (BH) (AH)

Mobile:

Email:

I prefer to read the monthly newsletter: (circle choice)

In colour on the Guild website **OR** a black & white printed copy (for a cost of \$10 per year) collected at monthly meetings

Month & Year of Birth: (for insurance purposes)

Signature:

Please circle the amount and method of payment, and then return your form to the Membership Secretary

Adult fee: \$35.00 Junior fee: \$20.00
cash /eftpos/cheque /direct debit:

Account Name: Geelong Patchwork and Quilters Guild Inc.

Bank: Bendigo Bank **BSB:** 633-000

Account Number: 161085014

Please use your name as reference

If undelivered, please return to:
PO Box 753,
Geelong Victoria 3220

